



**WellAway World Elite  
International Student 800  
Brochure**

University of Southern California  
Open Access PPO Plan

**WellAway**

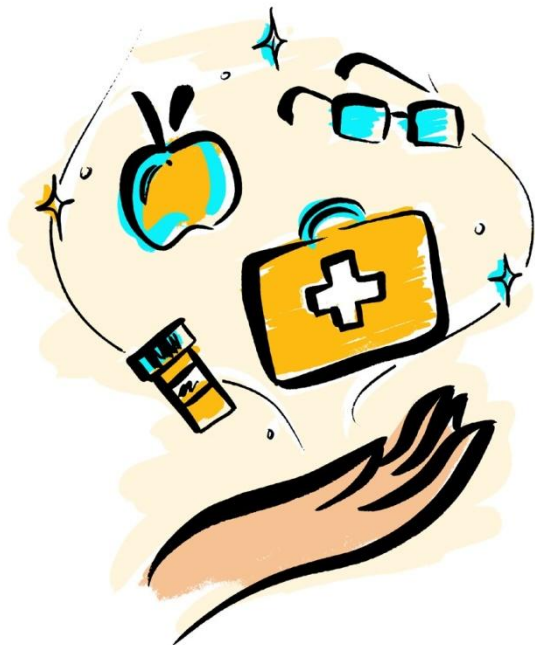
Policy Year: 2026-2027

[wellaway.com](http://wellaway.com)

# Why choose Wellaway?

**WellAway is a truly international private medical insurance company with health plans for today's international student.**

You are always our priority. Our cultural diversity allows students to be serviced with the utmost consideration for their studies abroad. With coverage in over 180 Countries and the Aetna Passport to Healthcare network of providers in the U.S., we aim to provide stability and security for students on the forefront of health insurance globalization.



- ✓ **Emergency Medical Assistance**
- ✓ **Multi-Lingual Customer Service**
- ✓ **Telemedicine Service**
- ✓ **Competitive Prices**

## 24/7 ConciergeCare

### Professional customer support

WellAway provides white glove customer service and expertise in international medical insurance with innovative benefits and resources. Our 24/7 multi-lingual ConciergeCare services are designed with you in mind. Let us help with setting up appointments, go in-depth with explanation of benefits or find a provider that's right for you.

- Provider search assistance
- Disease management
- 24/7 emergency medical assistance & evacuation
- Appointment setting with best-in-class providers
- White glove customer service
- Multi-lingual



💰 **ConciergeCare services are at no extra cost to you.**

## Telehealth

# Access to your doctor 24/7

Telehealth transforms how people access healthcare globally. Providing a new kind of healthcare experience, one with better convenience, outcomes and value.

- Receive quality care via phone, video or mobile app.
- Prompt treatment. Talk to your doctor in minutes.

## Get The Care You Need

Using Telehealth to speak with your doctors can treat many medical conditions, including:

- Cold & flu symptoms
- Allergies
- Pink Eye
- Respiratory infection
- Sinus problems
- Skin problems
- And more!



# aetna<sup>SM</sup>

Our Health Partner: Aetna Passport to Healthcare

## Networks that deliver greater accountability and value.

With a robust PPO network of providers across the country, Aetna Passport to Healthcare is there to help you better control costs and meet the unique health care needs of our students.



- ✓ 2 million health care professional
- ✓ Over 700,000 specialists and primary care physicians
- ✓ More than 5,700 hospitals

# USC WellAway World Elite International Student 800

(U.S. bound students only)

**Our ACA compliant USC World Elite Plans, meet the requirements of the U.S. Department of State for University of California students on an F1 visa.**

We understand the importance of education and how peace of mind and well-being directly impact learning and personal growth. USC WellAway World Elite- USC plans have been specifically designed so that you can easily use the USC Keck system and Student Health Center. The plans have been tailored to provide the vital benefits and more, to seamlessly navigate your world with wellness and security. We have knowledge and experience with reliable solutions you can trust.

## Coverage Highlights

Annual aggregate maximum:  
**Unlimited**

**Let us care for your health while you care for your goals. Stable and secure coverage for F-1 full-time students enrolled in an accredited educational program or in an associate, bachelor, master, or Ph.D. program at a university or other recognized higher education institution.**

- ACA Compliant
- Meets minimum U.S. health insurance requirements for valid F-1 visas in USA / ages 17 to 45 / Non-US citizens
- When you receive certain services at a USC Student Health Center, your Deductible will be waived, and you will not pay any Coinsurance or Copayments. (see Summary of Benefits below for details)
- Provider Access within the U.S.: as an exclusive member, you are covered with Aetna Passport to Healthcare
- Worldwide Coverage (excluding Home Country and certain limitations apply)
- Provider Access outside of the U.S.: An open-access network allows our members the flexibility to see a variety of doctors. Contact us and we will help you find the best doctor at the fairest price.
- Multi-lingual customer service
- No medical exams, no paperwork
- Instant proof of coverage
- Coverage of immunizations and vaccines including COVID-19
- Pre-existing conditions covered
- Medical evacuation and repatriation
- Prescription medication and contraceptives included
- Benefits are shown per person, per policy period
- Maximum amounts apply to certain benefits
- Pre-authorization is required for certain benefits. Refer to the terms and conditions of the policy.

## Cancelation and Refund

You will only be allowed to cancel your Policy and obtain a refund of your Premium if:

- Your waiver is not approved by your educational institution within thirty (30) days of the Effective Date of coverage because your Policy benefits do not meet the educational institution's minimum insurance requirements.
- You withdraw from classes within thirty (30) days from the Effective Date of coverage under a school-approved leave of absence.

You must provide written proof of the approved leave of absence and return date to your Home Country.

# WellAway World Elite International Student 800 Summary of Benefits

This Summary of Benefits will tell you about certain coverages and features of this plan. However, it is important that you read and understand the Policy (which contains a complete description of the terms and conditions), to make sure you are aware of any conditions, limitations and exclusions to your coverage. Benefits may be subject to Deductible, Coinsurance, and Copayment amounts. For questions about your coverage, contact a ConciergeCare Counselor: +1-855-773-7810, International +1-786-453-4008 (collect) or e-mail: [Conciergecare@payerfusion.com](mailto:Conciergecare@payerfusion.com).

## USC Student Health Centers

USC Student Health is dedicated to providing students all their basic primary care needs and other covered services through the USC Student Health Fee, which is paid each semester by students attending on-campus programs. For a complete list of services provided at the USC Student Health Centers visit <https://studenthealth.usc.edu/our-services>. For medical services which are not provided by the USC Student Health Center or the USC PBHS, please schedule an appointment with a Keck provider. **To find a Keck Provider, click here - [Find a Provider | Find a provider by condition, specialty or name. We are home to more than 900 exceptional health care providers. \(keckmedicine.org\)](#)**

## Mental Health Care On-Campus Services

*When you receive these services at a USC Student Health Center or USC PBHS, your Deductible will be waived, and you will not pay any Coinsurance or Copayments.*

<b>USC Student Health Center</b> (individual counseling, group counseling, referral appointments and crisis intervention sessions, workshops, psychiatry)	Your plan pays 100% if not covered by your Student Health Fee
<b>USC Psychiatry and Behavioral Health Services (PBHS)</b> Students will not require an initial evaluation and referral from USC Student Health. Students may refer themselves to PBHS for scheduling.	Your plan pays 100%

## Mental Health Care Off-Campus Services

	USC Designated Providers* Tier 1	In-Network Tier 2	Out-of-Network Tier 3	Worldwide Tier 4
<b>Physician, Psychologist or Mental Health Professional Services Behavioral health</b> (includes office visit/e-visit with a physician, psychologist, or mental health professional, diagnostic evaluation, psychiatric treatment, individual therapy, and group therapy)	No Charge	Deductible then you pay \$20 copayment	Deductible then you pay 40%	Deductible only
<b>Outpatient Behavioral health services*</b> (outpatient facility for mental health & substance use disorder services)	You pay 10%	Deductible then you pay 20%	Deductible then you pay 40%	Deductible only
<b>Inpatient Behavioral health services*</b> (mental health & substance use disorder services)	You pay 10%	Deductible then you pay 20%	Deductible then you pay 40%	Deductible only

**Following your registration with a Keck Provider, you may schedule an appointment. To Register with a Keck provider, click here - [International Health - Keck Medicine of USC Keck Medicine of USC International Health](#). To find a Keck Provider, click here - [Find a Provider | Find a provider by condition, specialty or name. We are home to more than 900 exceptional health care providers. \(keckmedicine.org\)](#)**

\*Prior Coverage Authorization required

# Medical Care and Specialty Services at the USC Student Health Centers

When you receive these services at a USC Student Health Center, your Deductible will be waived, and you will not pay any Coinsurance or Copayments.

<b>Primary Care</b> (physicals, illness/injury, reproductive/sexual health)	Your plan pays 100% if not covered by your Student Health Fee
<b>Specialty services</b> – require a referral from a USC Student Health provider (nutrition, orthopedics, dermatology, breast biopsy)	Your plan pays 100% if not covered by your Student Health Fee
<b>Allergy Clinic</b> (includes consultation, testing and desensitization)	Your plan pays 100% if not covered by your Student Health Fee
<b>Immunization Clinic</b> The following immunizations and vaccines are covered: Diphtheria, Hepatitis A, Hepatitis B, Herpes Zoster, Human Papillomavirus (HPV), Influenza (flu shot), Measles, Meningococcal, Mumps, Pertussis, Pneumococcal, Rubella, Tetanus, Varicella (Chickenpox), COVID-19.	Your plan pays 100% if not covered by your Student Health Fee
<b>Laboratory Services</b>	Your plan pays 100% if not covered by your Student Health Fee
<b>Medical Equipment</b>	Your plan pays 100% if not covered by your Student Health Fee
<b>Medications</b>	Your plan pays 100% if not covered by your Student Health Fee
<b>Radiology services</b>	Your plan pays 100% if not covered by your Student Health Fee
<b>Physical Therapy</b>	Your plan pays 100% if not covered by your Student Health Fee
<b>Occupational Therapy</b>	Your plan pays 100% if not covered by your Student Health Fee

\*Following your registration with a Keck Provider, you may schedule an appointment. To Register with a Keck provider, click here - [International Health - Keck Medicine of USC Keck Medicine of USC International Health](#).

## Pre-Attendance University Requirements

<b>Immunizations</b>	Your plan pays 100% if not covered by your Student Health Fee (must be obtained at the USC Student Health Center or an In-Network pharmacy)
<b>TB Testing</b>	Your plan pays 100% if not covered by your Student Health Fee (Policyholder only and must be performed in an In-Network independent free-standing laboratory or the USC Student Health Center)

# Limit & Cost Sharing

	In-Network	Out-of-Network	Worldwide**
<b>Annual limit</b>	Unlimited	Unlimited	Unlimited
<b>Deductible</b>	Combined Tier 1 and Tier 2 \$800	\$1,200	\$800
<b>Coinsurance (Your cost share)</b>			
Tier 1: USC Designated Providers* (In-Network)	Tier 1: 0% for Physician services and 10% for all other provider services	N/A	N/A
Tier 2: In-Network Providers (Open Access PPO)	Tier 2: 20%	N/A	N/A
Tier 3: Out-of-Network Providers	N/A	Tier 3: 40%	N/A
Tier 4: Worldwide (excluding the USA and Home Country)	N/A	N/A	Tier 4: 100%
<b>Out-of-pocket maximum</b>	Combined Tier 1 and Tier 2 \$8,500	\$10,000	Unlimited

\*Following your registration with a Keck Provider, you may schedule an appointment. To Register with a Keck provider, click here - [International Health - Keck Medicine of USC Keck Medicine of USC International Health](#).

\*\*Worldwide is outside the USA and Home Country

# Wellness and Preventive Services

	USC Designated Providers Tier 1	In-Network Tier 2	Out-of-Network Tier 3	Worldwide Tier 4
<b>Adult Wellness Care</b>				
Periodic routine health exams, routine gynecological exams, immunizations and related preventive services such as prostate specific antigen (PSA), routine mammograms, pap smears and colonoscopies for colorectal cancer screenings (please refer to benefit description for Preventive Services in this Policy).	Your plan pays 100%	Your plan pays 100%	Deductible then you pay 40%	Your plan pays 100%
Your physician will measure your height, weight, blood pressure and take other routine measurements; review your medical and family history; assess your risk factors and treatment options; review your health risk assessment questionnaire; update your list of providers and prescriptions; look for signs of cognitive impairment; and set up a screening schedule for appropriate preventive services.				
<b>Child Wellness Care</b>				
Periodic age specific physical examinations and developmental assessments; office visit; health history; hearing examinations; age related diagnostic tests; vaccination and immunization necessary for prevention; and track growth and development in accordance with pediatric guidelines.	Your plan pays 100%	Your plan pays 100%	Deductible then you pay 40%	Your plan pays 100%
Preventive dental services for children under 19 (includes oral exams, cleaning and fluoride treatment every 6 months, sealants every 36 months, space maintainers, and x-rays every 6 months)	Your plan pays 100%	Your plan pays 100%	Deductible then you pay 40%	Your plan pays 100%
Eye exams and eye glasses for children under 19 (includes one eye exam and one pair of glasses every benefit period)	Your plan pays 100%	Your plan pays 100%	Deductible then you pay 40%	Your plan pays 100%

Following your registration with a Keck Provider, you may schedule an appointment. To Register with a Keck provider, click here - [International Health - Keck Medicine of USC Keck Medicine of USC International Health](#). To find a Keck Provider, click here - [Find a Provider | Find a provider by condition, specialty or name](#). We are home to more than 900 exceptional health care providers. ([keckmedicine.org](http://keckmedicine.org))

# Services that Require Hospitalization

	USC Designated Providers Tier 1	In-Network Tier 2	Out-of-Network Tier 3	Worldwide Tier 4
<b>Hospitalization*</b>	Deductible then you pay 10%	Deductible then you pay 20%	Deductible then you pay 40%	Deductible only
<b>Emergency room</b> When your symptoms are severe and your health is in jeopardy, causing loss of life, limb or death (medically necessary). If you use an emergency room in the Hospital for a non-emergency service, the Services will not be covered.	Deductible and \$200 copayment per visit (waived if admitted)	Deductible and \$200 copayment per visit (waived if admitted)	Deductible and \$200 copayment per visit (waived if admitted)	Deductible only
<b>Rehabilitative services*</b> (treatment of CVA, head injury, spinal cord injury, or as required as a result of post-operative brain surgery when certain criteria are met)	Deductible then you pay 10%	Deductible then you pay 20%	Deductible then you pay 40%	Deductible only
<b>Habilitative services*</b> (occupational, physical and speech therapy when certain criteria are met)	Deductible then you pay 10%	Deductible then you pay 20%	Deductible then you pay 40%	Deductible only
<b>Physician services</b> (consultations by a physician or specialist while inpatient only when medically necessary)	Deductible only	Deductible then you pay 20%	Deductible then you pay 40%	Deductible only
<b>Surgical procedures and surgeon fees (inpatient)*</b> <ul style="list-style-type: none"> <li>Refers to the fees charged by the main surgeon that performed the surgical procedure.</li> <li>Some complex medical procedures may require an assistant surgeon or co-surgeon performing services when indicated by evidence based medicine.</li> <li>Services provided by an anesthesiologist during a covered surgical procedure is a covered service.</li> </ul>	Deductible only	Deductible then you pay 20%	Deductible then you pay 40%	Deductible only

**Following your registration with a Keck Provider, you may schedule an appointment. To Register with a Keck provider, click here - [International Health - Keck Medicine of USC Keck Medicine of USC International Health](#). To find a Keck Provider, click here - [Find a Provider | Find a provider by condition, specialty or name](#). We are home to more than 900 exceptional health care providers. ([keckmedicine.org](http://keckmedicine.org))**

\*Prior Coverage Authorization required

# Services that Require Hospitalization

USC Designated  
Providers  
Tier 1

In-Network  
Tier 2

Out-of-Network  
Tier 3

Worldwide  
Tier 4

<p><b>Oncology treatment, drugs &amp; reconstructive surgery*</b></p> <ul style="list-style-type: none"> <li>Oncology treatment includes chemotherapy, radiation or pharmaceutical treatments which have approved efficacy and market distribution.</li> <li>Reconstructive surgery due to illness or injury e.g., breast reconstruction or other bodily reconstruction due to trauma, infection, tumors or disease that will improve function and ability.</li> </ul>	Deductible then you pay 10%	Deductible then you pay 20%	Deductible then you pay 40%	Deductible only
<p><b>Organ transplant*</b> (includes heart, lung, heart and lung, kidney, pancreas, kidney and pancreas, liver, cornea, allogenic and autologous bone marrow and peripheral stem cell transplants)</p>	Deductible then you pay 10%	Deductible then you pay 20%	Deductible then you pay 40%	Deductible only
<p><b>Emergency ambulance services</b> (from emergency location to nearest facility, from one hospital to another, or from hospital to your home or skilled nursing facility)</p>	Deductible then you pay 10%	Deductible then you pay 20%	Deductible then you pay 20%	Deductible only

**Following your registration with a Keck Provider, you may schedule an appointment. To Register with a Keck provider, [click here](#) - [International Health - Keck Medicine of USC Keck Medicine of USC International Health](#). To find a Keck Provider, [click here](#) - [Find a Provider | Find a provider by condition, specialty or name. We are home to more than 900 exceptional health care providers. \(keckmedicine.org\)](#)**

\*Prior Coverage Authorization required

# Outpatient Care

USC Designated  
Providers  
Tier 1

In-Network  
Tier 2

Out-of-Network  
Tier 3

Worldwide  
Tier 4

All ambulatory services must be performed in a free-standing independent ambulatory facility. If ambulatory services are not performed in a free-standing independent facility a Site of Service Differential will apply. It is indicated that the services below be performed in an In-Network Physician's office or in an In-Network free standing independent facility to maximize your benefit, reduce your costs and avoid Site of Service Differential costs.

<b>Urgent care center</b>	Deductible then \$50 copayment	Deductible then \$50 copayment	Deductible then you pay 40%	Deductible only
<b>Outpatient ambulatory surgical facility &amp; surgical care*</b> (free-standing only)	Deductible then you pay 10%	Deductible then you pay 20%	Deductible then you pay 40%	Deductible only
<b>Surgeon Fees</b> <ul style="list-style-type: none"> <li>Some complex medical procedures may require an assistant surgeon or co-surgeon performing services when indicated by evidence based medicine.</li> <li>Services provided by an anesthesiologist during a covered surgical procedure is a covered service.</li> </ul>	Deductible only	Deductible then you pay 20%	Deductible then you pay 40%	Deductible only
<b>Oncology treatment, drugs &amp; reconstructive surgery*</b> <ul style="list-style-type: none"> <li>Oncology treatment includes chemotherapy, radiation or pharmaceutical treatments which have approved efficacy and market distribution.</li> <li>Reconstructive surgery due to illness or injury e.g., breast reconstruction or other bodily reconstruction due to trauma, infection, tumors or disease that will improve function and ability.</li> </ul>	Deductible then you pay 10%	Deductible then you pay 20%	Deductible then you pay 40%	Deductible only
<b>Routine X-rays and laboratory tests</b> When not performed in a physician's office or in a free-standing non-hospital facility a Site of Service Differential cost will apply.	Deductible then you pay 10%	Deductible then you pay 20%	Deductible then you pay 40%	Deductible only
<b>Advanced diagnostic and interventional radiology services*</b> When not performed in a free-standing non-hospital facility a Site of Service Differential cost will apply.	Deductible then you pay 10%	Deductible then you pay 20%	Deductible then you pay 40%	Deductible only

**Following your registration with a Keck Provider, you may schedule an appointment. To Register with a Keck provider, [click here - International Health - Keck Medicine of USC Keck Medicine of USC International Health](#). To find a Keck Provider, [click here - Find a Provider | Find a provider by condition, specialty or name](#). We are home to more than 900 exceptional health care providers. ([keckmedicine.org](http://keckmedicine.org))**

\*Prior Coverage Authorization required

# Outpatient Care

USC Designated  
Providers  
Tier 1

In-Network  
Tier 2

Out-of-Network  
Tier 3

Worldwide  
Tier 4

All ambulatory services must be performed in a free-standing independent ambulatory facility. If ambulatory services are not performed in a free-standing independent facility a Site of Service Differential will apply. It is indicated that the services below be performed in an In-Network Physician's office or in an In-Network free standing independent facility to maximize your benefit, reduce your costs and avoid Site of Service Differential costs.

<b>Rehabilitative services*</b> (for treatment of CVA, head injury, spinal cord injury, or as required as a result of post-operative brain surgery when certain criteria are met)	Deductible then you pay 10%	Deductible then you pay 20%	Deductible then you pay 40%	Deductible only
<b>Habilitative services*</b> (limited to occupational, physical and speech therapy when certain criteria are met)	Deductible then you pay 10%	Deductible then you pay 20%	Deductible then you pay 40%	Deductible only
<b>Outpatient physical therapy*</b> (physical therapy and spinal manipulation when restoring function loss due to a medical condition or to attain age appropriate function for activities of daily living - treatment plan must be provided)	Deductible then \$15 copayment	Deductible then \$30 copayment	Deductible then you pay 40%	Deductible only
<b>Outpatient chiropractic &amp; spinal manipulation*</b> (chiropractic services and spinal manipulation <i>(to correct a slight dislocation of a bone or joint that is demonstrated by x-ray)</i> when restoring function loss due to a medical condition or to attain age-appropriate function for activities of daily living - treatment plan must be provided)	Deductible then \$15 copayment (limited to combined 15 visits per benefit period)	Deductible then \$30 copayment (limited to combined 15 visits per benefit period)	Deductible then you pay 40% (limited to combined 15 visits per benefit period)	Deductible only (limited to combined 15 visits per benefit period)
<b>Alternative medicine (combined benefit limits)</b> Acupuncture, homeopathy, Chinese Medicine	Deductible then \$15 copayment (limited to combined 15 visits per benefit period)	Deductible then \$30 copayment (limited to combined 15 visits per benefit period)	Not covered	Deductible only (limited to combined 15 visits per benefit period)
<b>Emergency dental services</b> (due to damage to natural sound teeth which is treated within 90 days of the accidental dental injury)	Deductible then you pay 10% up to \$10,000	Deductible then you pay 20% up to \$10,000	Deductible then you pay 40% up to \$10,000	Deductible only up to \$10,000
<b>Vision services</b> (for the treatment of aphakia, injury to or diseases of the eyes and glasses or lenses following cataract surgery)	Deductible then you pay 10%	Deductible then you pay 20%	Deductible then you pay 40%	Deductible only

**Following your registration with a Keck Provider, you may schedule an appointment. To Register with a Keck provider, [click here - International Health - Keck Medicine of USC Keck Medicine of USC International Health](#). To find a Keck Provider, [click here - Find a Provider | Find a provider by condition, specialty or name](#). We are home to more than 900 exceptional health care providers. ([keckmedicine.org](http://keckmedicine.org))**

\*Prior Coverage Authorization required

# Physician Services

USC Designated  
Providers  
Tier 1

In-Network  
Tier 2

Out-of-Network  
Tier 3

Worldwide  
Tier 4

Cost Share amounts are waived at USC Student Health Center.

<b>Telemedicine consultations</b> (in the United States for illnesses of cold & flu symptoms, allergies, pink eye, respiratory infection, sinus problems and skin problems)	Your plan pays 100%	\$10 copayment Limited to 12 visits per benefit period	Not covered	Deductible only
<b>Physician E-Visits</b> (E-visits are available for established patients and should not exceed 1 visit in a 7 day period. E-Visits are limited to 1 per day per Physician and must be legally authorized in your state of residence. E-visits for mental health are covered under a different benefit)	Your plan pays 100%	Deductible then \$30 copayment	Deductible then you pay 40%	Deductible only
<b>Primary care</b> (includes general consultation, primary care visit, check- ups, office visits, and gynecologist when designated as your primary care physician)	Your plan pays 100%	Deductible then \$30 copayment	Deductible then you pay 40%	Deductible only
<b>Specialist consultation</b>	Your plan pays 100%	Deductible then \$30 copayment	Deductible then you pay 40%	Deductible only
<b>Allergy testing &amp; treatment</b> (includes injections for allergies, may include desensitization therapy and the cost of hypo-sensitization serum)	Your plan pays 100%	Deductible then \$30 copayment	Deductible then you pay 40%	Deductible only

# Maternity Care

USC Designated  
Providers  
Tier 1

In-Network  
Tier 2

Out-of-Network  
Tier 3

Worldwide  
Tier 4

<b>Prenatal and postnatal physician consultations</b>	No Charge	No Charge	Deductible then you pay 40%	Deductible only
<b>Labor and delivery</b> Hospital stay minimum 48 hours for normal delivery and 96 hours for c-section (includes hospital, obstetrician, midwife, anesthesiologist, pediatrician (well baby) for a normal delivery)	Deductible then you pay 10%	Deductible then you pay 20%	Deductible then you pay 40%	Deductible only
<b>Complications of Pregnancy</b> (mother only) miscarriage, preeclampsia, ectopic pregnancy and c-section	Deductible then you pay 10%	Deductible then you pay 20%	Deductible then you pay 40%	Deductible only
<b>Birthing center</b>	Deductible then you pay 10%	Deductible then you pay 20%	Deductible then you pay 40%	Deductible only

**Following your registration with a Keck Provider, you may schedule an appointment. To Register with a Keck provider, click here - [International Health - Keck Medicine of USC Keck Medicine of USC International Health](#). To find a Keck Provider, click here - [Find a Provider | Find a provider by condition, specialty or name](#). We are home to more than 900 exceptional health care providers. ([keckmedicine.org](http://keckmedicine.org))**

# Maternity Care

	USC Designated Providers Tier 1	In-Network Tier 2	Out-of-Network Tier 3	Worldwide Tier 4
<b>Newborn care</b> (a newborn child who is properly enrolled will be covered from the moment of birth for injury or illness, including routine care, and the necessary care or treatment of medically diagnosed congenital defects, birth abnormalities and premature birth)	Deductible then you pay 10%	Deductible then you pay 20%	Deductible then you pay 40%	Deductible only
<b>Infertility treatment</b>	Not covered	Not covered	Not covered	Not covered
<b>Sterilization</b> (surgical sterilizations, tubal ligations and vasectomies only)	Deductible then you pay 10%	Deductible then you pay 20%	Deductible then you pay 40%	Deductible only
<b>Abortion</b>	Deductible then you pay 10%	Deductible then you pay 20%	Deductible then you pay 40%	Deductible only

# Other Services

	USC Designated Providers Tier 1	In-Network Tier 2	Out-of-Network Tier 3	Worldwide Tier 4
<b>Skilled nursing facility*</b>	Deductible then you pay 10%	Deductible then you pay 20%	Deductible then you pay 40%	Deductible only
<b>Home healthcare*</b> (care must begin within 14 days following your hospital stay, prescribed by a physician and provided under the supervision of a registered nurse)	Deductible then you pay 10%	Deductible then you pay 20%	Deductible then you pay 40%	Deductible only
<b>Hospice*</b> (accommodation, nursing care and support for the treatment of end of life stages which must be approved by a physician)	Deductible then you pay 10%	Deductible then you pay 20%	Deductible then you pay 40%	Deductible only
<b>Dialysis*</b> (includes equipment, training and medical supplies at a licensed provider location or dialysis center)	Deductible then you pay 10%	Deductible then you pay 20%	Deductible then you pay 40%	Deductible only
<b>Durable medical equipment</b> (helps to complete your daily activity and includes walker, wheelchair, crutches, canes, oxygen equipment or other equipment that can withstand repeated use which must be medically necessary and prescribed by a physician)	Deductible then you pay 10%	Deductible then you pay 20%	Deductible then you pay 40%	Deductible only
<b>Prosthetic Devices</b>	Deductible then you pay 10%	Deductible then you pay 20%	Deductible then you pay 40%	Deductible only

**Following your registration with a Keck Provider, you may schedule an appointment. To Register with a Keck provider, [click here](#) - [International Health - Keck Medicine of USC](#) [Keck Medicine of USC](#) [International Health](#). To find a Keck Provider, [click here](#) - [Find a Provider | Find a provider by condition, specialty or name](#). We are home to more than 900 exceptional health care providers. ([keckmedicine.org](http://keckmedicine.org))**

\*Prior Coverage Authorization required

## Prescription Drugs

	USC Pharmacy Tier 1	In-Network Pharmacy Tier 2	Out-of-Network Tier 3	Worldwide Tier 4
<b>Preventive</b> (including generic oral contraceptives)	No Charge	No Charge	Not covered	Deductible only
<b>Generic</b>	\$15 copayment	\$15 copayment	\$15 copayment then you pay 40%	Deductible only
<b>Brand</b>	\$40 copayment	\$40 copayment	\$40 copayment then you pay 40%	Deductible only
<b>Non-preferred brands</b>	\$75 copayment	\$75 copayment	\$75 copayment then you pay 40%	Deductible only
<b>Specialty</b>	\$100 copayment	\$100 copayment	\$100 copayment then you pay 40%	Deductible only

## Evacuation & Repatriation\*

<b>Medical evacuation</b>	Paid in full up to \$120,000 limit per covered person, per benefit period
<b>Medical repatriation</b>	Paid in full up to \$50,000 lifetime limit per covered person
<b>Repatriation of mortal remains</b>	Paid in full up to \$25,000 lifetime limit per covered person

**Following your registration with a Keck Provider, you may schedule an appointment. To Register with a Keck provider, click here - [International Health - Keck Medicine of USC Keck Medicine of USC International Health](#). To find a Keck Provider, click here - [Find a Provider | Find a provider by condition, specialty or name](#). We are home to more than 900 exceptional health care providers. ([keckmedicine.org](http://keckmedicine.org))**

\*Prior Coverage Authorization required

# WellAway<sup>®</sup>

Keeping You Well, While You're Away.<sup>®</sup>

aetna<sup>™</sup>

payer<sup>®</sup>fusion<sup>™</sup>

WellAway Limited

c/o Compass Administration  
Services Ltd.  
PO Box HM 2879  
Hamilton HM LX  
Bermuda

Phone: +1 441-296-0651

info@wellaway.com  
wellaway.com



---

This material is for informational purposes only and is subject to change. If you decide to purchase a WellAway product, you will be provided with a member package that contains a complete description of the benefits, conditions, limitations and exclusions of coverage. Products and services may not be available in all jurisdictions and are expressly excluded where prohibited by applicable law.

The contents of this material are the exclusive intellectual property of WellAway Limited. No reproduction, changes or copying is possible without the consent of WellAway Limited. The WellAway name, brand and logos are the registered marks of WellAway Limited and the WellAway Limited Segregated Account, Hamilton, Bermuda.